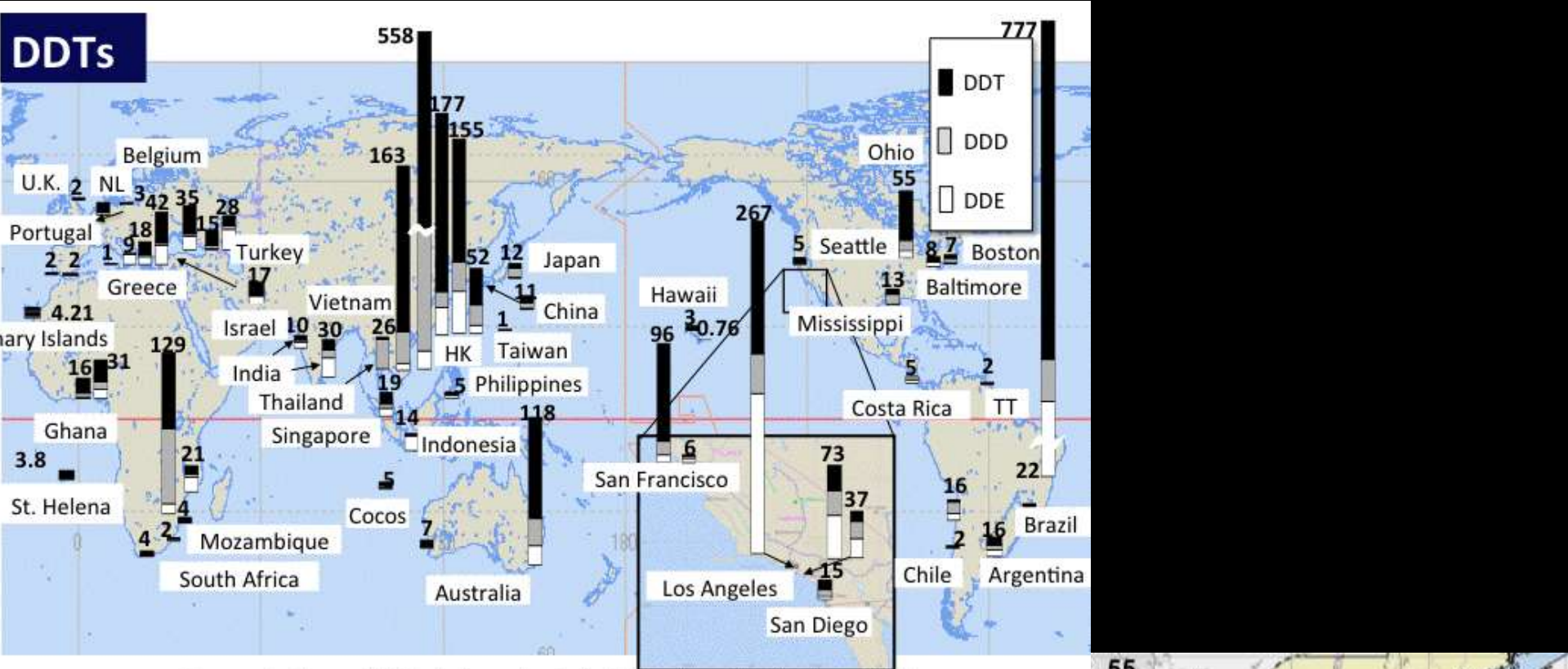


Nurdle Study – Sandy Hook Beach Sweeps (2008-2015)





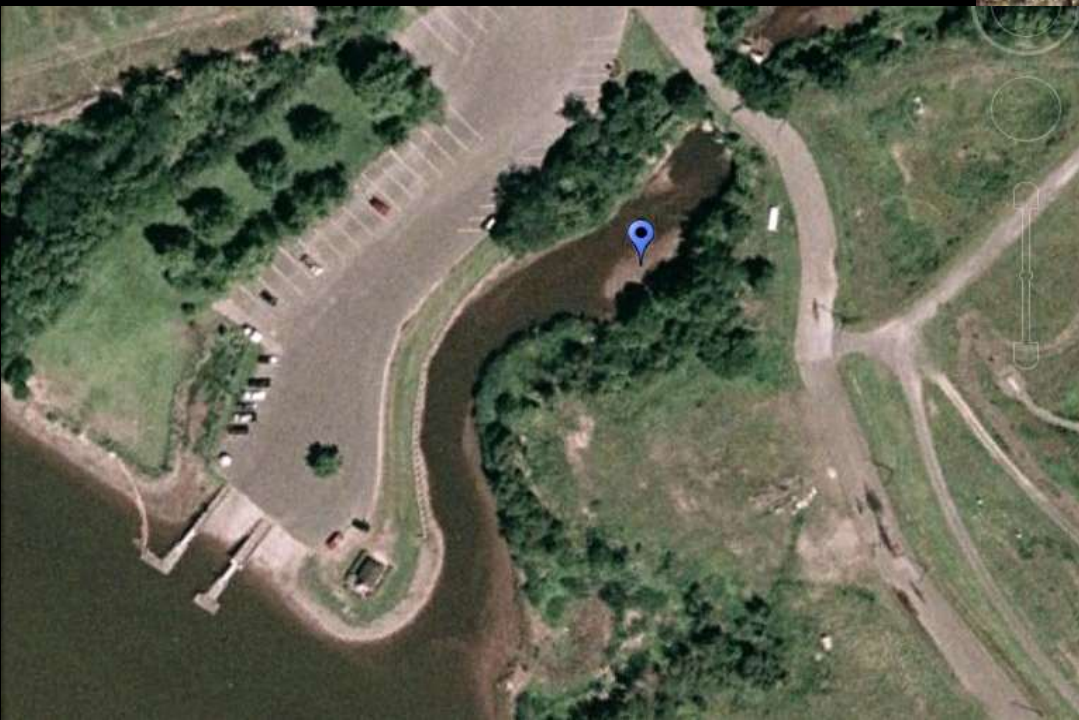
Concentration of DDTs in beached plastic resin pellet (ng/g-pellet)





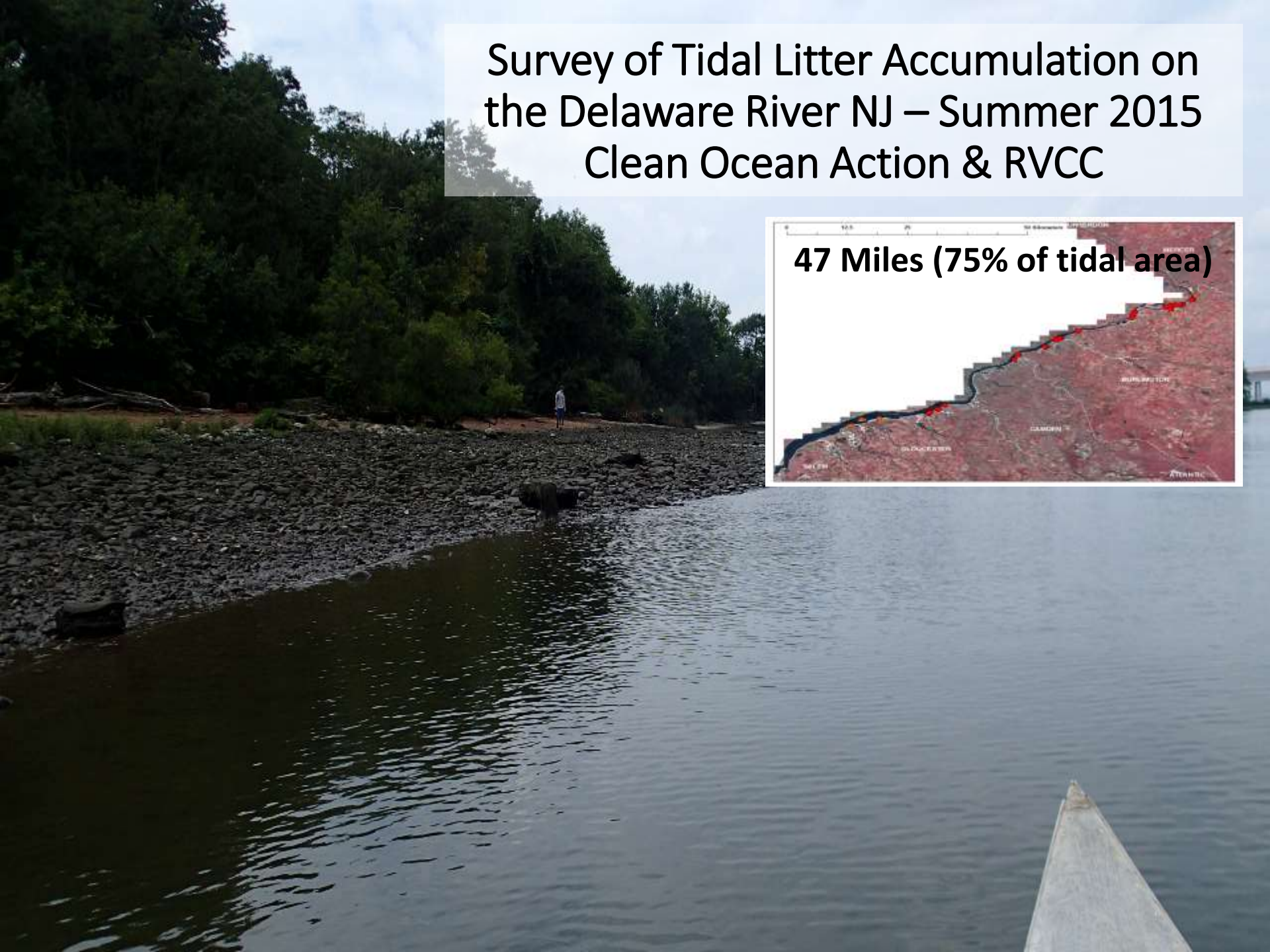
**Nurdle Study –
Source Identification
RVCC Students (2008-2015)**



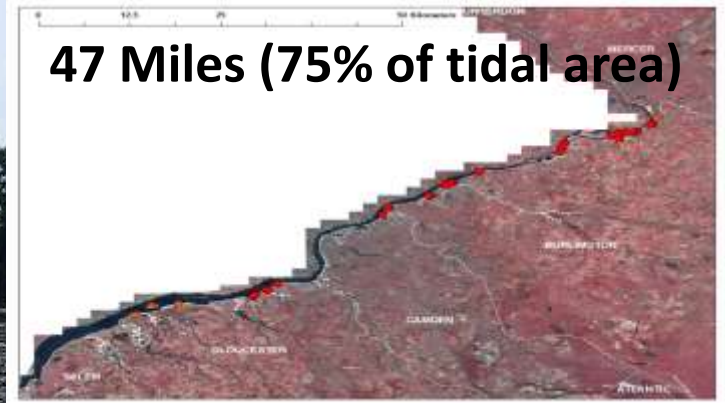




Survey of Tidal Litter Accumulation on the Delaware River NJ – Summer 2015 Clean Ocean Action & RVCC



47 Miles (75% of tidal area)



- **Average: 39 trash pieces/m² (max = 192/m²).**
- **Peak accumulation areas: 221 pieces/m² (max = 300/m²)**
- **13% of the shore was accumulating debris**

Results





%	#	Material	Type
40.5	1963	Foam Plastic	Pieces
13.7	664	Plastic	Plastic Pieces
12.6	609	Plastic	Caps/Lids
8.2	399	Plastic	Beverage/Soda Bottles
8.0	387	Plastic	Cap Rings
4.1	197	Plastic	Food, Candy Wrappers/Bags
1.6	77	Foam Plastic	Cups
1.3	62	Metal	Beverage Cans
1.1	54	Wood	Lumber Pieces
1.1	53	Metal	Pull/Pop Tabs

Estimated total amount of surface debris:

2,839,200 pieces of trash.

2014-2015 Study of Forest Health in Central New Jersey

RVCC & NJ Audubon – NSF SENCER-ISE



2014-2015 results:
11 student interns
1400+ hours worked
68 sites surveyed
1540 tree/shrub quadrats
3080 seedlings plots

Counted/Measured:
377,028 trees/seedlings!!
10,267 herb patches
7495 shrub patches
3080 litter depth
3080 canopy cover

